



20-sim Newsletter July 2006 Number 26

In this issue

1. 20-sim 3.6.10
2. What's new in 3.6.10?
3. 20-sim meeting
4. Distributors

This newsletter is published by:

Controllab Products B.V.
Drienerlolaan 5 HO-8266
7522 NB Enschede
The Netherlands
phone: +31 53 489 3096
fax: +31 53 489 2223
email: info@20sim.com
web: www.20sim.com

Copyright:

Copying of articles without written permission of Controllab Products B.V. is not allowed.

Disclaimer:

While the publishers have taken all reasonable precautions and made all reasonable effort to ensure the accuracy of material contained in this publication, the publisher does not assume any responsibility or liability for any loss or damage which may result from any inaccuracy or omission in this publication, or from the use of the information contained herein.

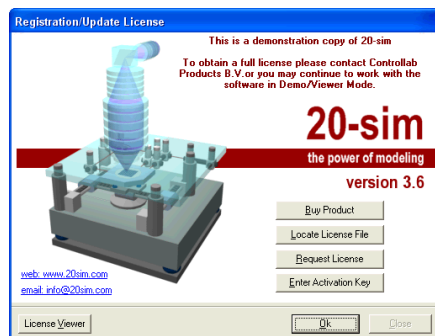
20-sim 3.6.10

A new build 20-sim has been released: 20-sim 3.6.10. Users with a valid maintenance contract can download the demo version from our website. During installation, the demo version will automatically detect if a valid license of 20-sim was installed and run an update.

Users who are interested in the new build, should try out the demo version or apply for a test license.

Test License

Engineers, teachers, researchers and students who are interested in 20-sim may apply for a test license. This license will be valid for several weeks and enables the full functionality of 20-sim. In this case you will also be able to save your models.



Press the "Request License" button in the Welcome dialog to open a message box with an installation key which is specific for your hardware. Send this key together with your contact info and some motivation why you are interested in 20-sim to info@20sim.com. When your request is approved, the license will be send to you within two working days.

What's new in 3.6.10?

Features

- Error dialog is closed automatically before processing
- 3D Mechanics editor gives warnings when using sensors on reference bodies
- Tooltip functionality added in simulator window

- Cell gridding toolbox (experimental phase, not documented)
- Parameters may be declared with relations (experimental phase, not documented)

Bug fixes

- The servo motor editor now supports creation of own motor models
- The servo motor editor now saves and opens databases correctly
- Small errors in BDF method corrected.

20-sim meeting

Controllab Products and Applied Simulation will organize a meeting in the beautiful city of Bath on the 18th of October 2006. Join us at the University of Bath to learn about the modelling and simulation program 20-sim, meet experienced 20-sim users and hear about state of the art research. The focal point of this meeting is the use of port based modelling with bond graphs and iconic diagrams.

Registration for this event will includes refreshments, lunch and dinner. Comfortable guest accommodation is available at modest prices at the University of Bath.



We look forward to welcoming you at the wonderful city of Bath for what we feel sure will be an interesting and rewarding experience.



Preliminary program

- "Welcome and introduction", Kevin Edge, Vice Chancellor & Pro Vice Chancellor Research, University of Bath
- "Advanced Modelling in 20-sim using Bond Graphs", Christian Kleijn, Controllab Products
- "Modelling and Simulation: A Comparison of Methodologies and Tools". Roger Ngwompo, University of Bath
- "Application of Bond Graphs to physical systems" Abdi Yusuf, Airbus UK
- "Using 20-sim for Aeronautical Applications" Peter Thomasson, Cranfield Aerospace Ltd
- "Aircraft Model Library in 20-sim" Michael Cook, Cranfield University
- "Full and reduced order modelling of Doubly Fed Induction Machine wind generators", Morris Lockwood, ERA Technology Ltd.
- "Adaptive feed forward modelling", Prof. dr. Job van Amerongen, Control Engineering, University Twente

Date & Location

The meeting will be held on the 18th of October 2006 at the Department of Mechanical Engineering, University of Bath, Claverton Down, Bath BA2 7AY, United Kingdom.

Prices

Registration for this event will cost € 160,- and will include refreshments, lunch and dinner. If you register for the event, Controllab Products B.V. will send an invoice by e-mail with payment instructions.

Registration

As the space at the lecture room is limited, and bookings will be on a first order basis, early registration using the attached form is highly recommended. Please download the on-line registration form to register for this event. (www.20sim.com/bath.htm).

Distributors

Distributor UK

Applied Simulation Ltd.
Mr. Bill Havranek

19 Jersey Road Ferring
West Sussex BN12 5PU
United Kingdom

+44 (0)1903245701
+44 (0)1903245701 (fax)
+44 (0)7900242564 (mobile)
william@whavranek.wanadoo.co.uk

Distributor India & Asia Pacific

ni Logic Pvt. Ltd.
Mr. Bhupesh Purohit

25/B5, Bandal Complex,
Bhusari Colony, Paud Road,
Kothrud, Pune - 411038
Maharashtra, India.

+91 (0)20 - 2528 6948
+91 (0)20 - 3090 4378 (fax)
+91 (0)20 - 3333 9823 (mobile)

<http://www.ni2designs.com>

Distributor South Africa

Pert Industrials
Mr. Peter Horszowski

132 Tenth Road, Kew,
Johannesburg
South Africa

+27 (0)1188 21435
+27 (0)1188 21453

pert@global.co.za
<http://www.pert.co.za>

Distributor South America

Anacom Electronica Ltda
Mr. Carlos Eugenio Lion

Rua Nazareth, 807
São Caetano do Sul – SP
09551-200 – Brazil

+55 (0)11 - 3422 4200
+55 (0)11 - 3422 4242 (fax)

info@anacom.com.br
<http://www.anacom.com.br>

Distributor Taiwan

Controllab Products is pleased to announce that a new distributor has been found to represent the sales activities on 20-sim for Taiwan:

Scientific Formosa, Inc.
Mr. Wan-Jin Leu, (president)

11th Floor, 354 Fu-Hsing N.Road,
Taipei 104, Taiwan, R.O.C.

+886 2 2505 0525
+886 2 2503 1680 (fax)

wjleu@sciformosa.com.tw
<http://www.sciformosa.com.tw>